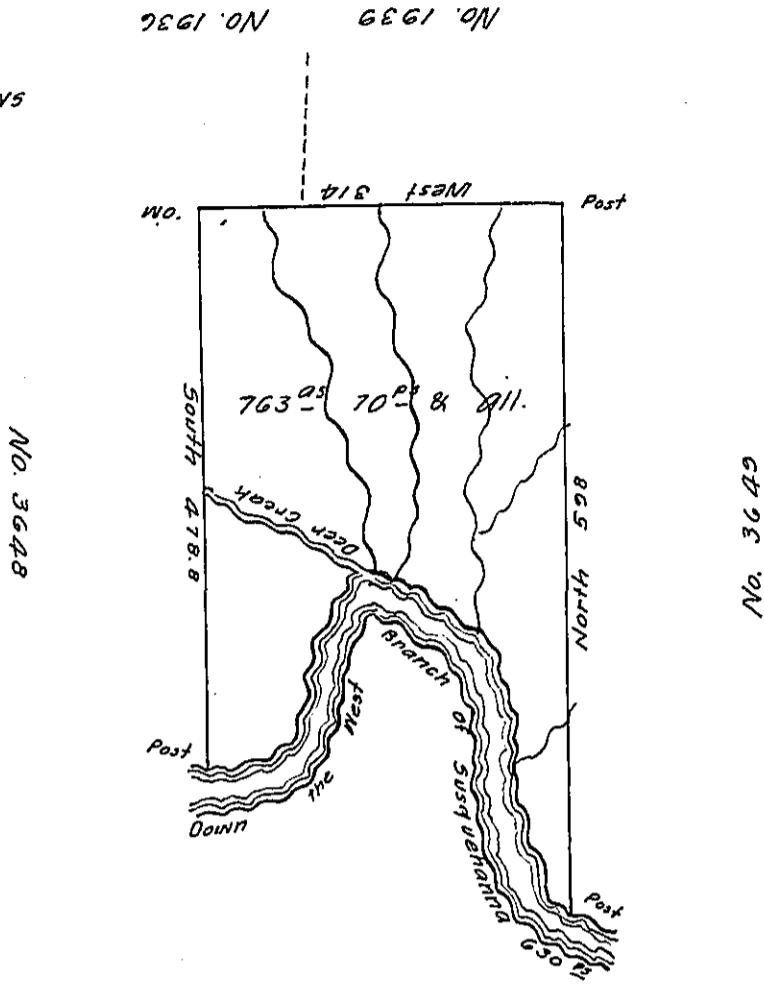


The Courses and Distances
Down the river are as follows

N. 79 E. 70
N. 17 E. 166
S. 62 E. 160
S. 9 E. 160
S. 20 E. 61
S. 68 E. 13
630



Situate on the North side of the West Branch
of the River Susquehanna including the mouth of Deer Creek,
in North^d County, Containing 763 acres 70 perches and the usual allow-
ance for Roads &c

surveyed June 11th 1793 for Robert Morris
and Walter Stewart Esq^{rs} in pursuance of a Warrant No.
3647 bearing date January 10th 1793.

Daniel Brodhead Esq^r S.G.

IN TESTIMONY that the above is a copy of the original remaining on file in
the Department of Internal Affairs of Pennsylvania, made
conformably to an Act of Assembly approved the 16th day of
February, 1833, I have hereunto set my Hand and caused
the Seal of said Department to be affixed at Harrisburg,
this twenty sixth day of December 1905

Isaac R. Pursuer
Secretary of Internal Affairs.